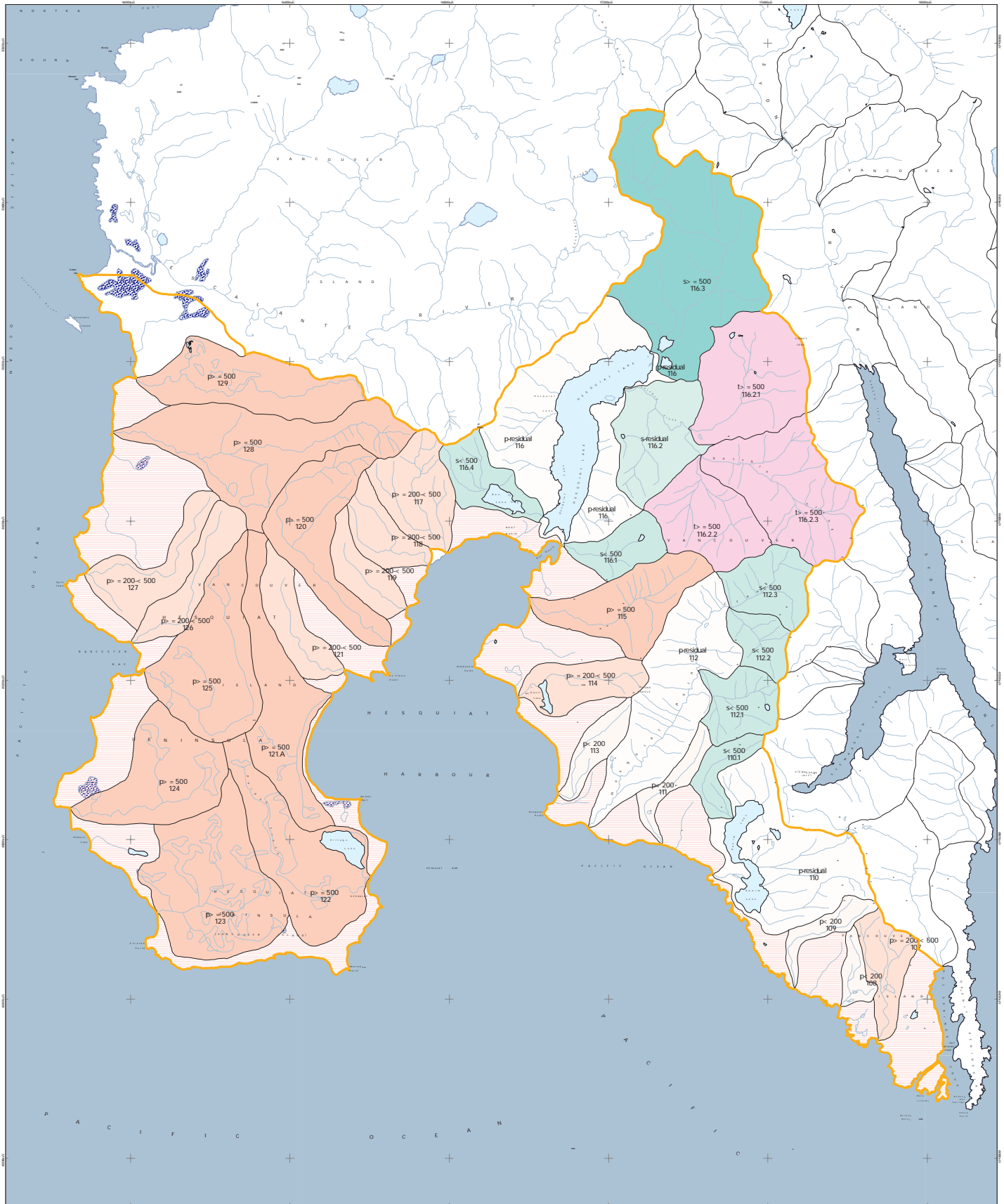


Hesquiat Planning Unit Watershed Rate of Cut Limits



- | | | |
|--------------------------------|---------------------------|----------------------------|
| primary -not a watershed | secondary -residual | tertiary >= 500 hectares |
| primary -residual | secondary < 500 hectares | quaternary < 500 hectares |
| primary < 200 hectares | secondary >= 500 hectares | quaternary >= 500 hectares |
| primary >= 200 -< 500 hectares | tertiary -residual | |
| primary >= 500 hectares | tertiary < 500 hectares | |



Albers Equal Area projection
NAD83